

Equipment Line Card

Central Office Switching



- ◆ Lucent Technologies 5ESS
- ◆ Nortel DMS10, DMS100 / 200 / RSC Remote
- ◆ Siemens Stromberg Carlson DCO / EWSD

Transmission/Broadband



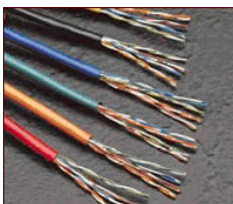
- ◆ Adtran broadband access products
- ◆ AFC UMC1000
- ◆ Cisco 15454
- ◆ Comtest POTS Splitter
- ◆ Fujitsu Fiber Terminals
- ◆ Lucent Technologies Anymedia, DACS, DDM2000, SLC2000
- ◆ Nortel S/DMS OC3/OC12, DE4E
- ◆ SPC Encapsulated T1 Repeaters, Housings
- ◆ Telco Systems D3/D4
- ◆ Tellabs 530/532/5500 DACS

Batteries & Power



- ◆ Argus Rectifiers, Power Boards, Inverters
- ◆ C&D Batteries and racks
- ◆ Eagle Picher Batteries and racks
- ◆ Energys Yuasa Batteries and racks
- ◆ GNB Batteries and racks
- ◆ Liebert (Emerson/Marconi) Rectifiers & Power Boards, UPS
- ◆ Reltec (Lorain) Power Products

Misc. Central Office



- ◆ ADC DSX Panels, Fiber Patch Panels, Patch Cords, Terminal Blocks
- ◆ Charles Industries / Wescom Line Treatment
- ◆ Corning Cable protector blocks and modules
- ◆ Custom fiber jumpers and copper cables
- ◆ Newton hardware – cable rack, relay rack, etc
- ◆ Telect DSX Panels, Fiber Patch Panels, Patch Cords, Terminal Blocks