

DC Distribution Panel for NetSure™ Systems

Key Features

- **Flexible mounting options** — allow for relay rack or wall mounting
- **Compact panel with front access and top feed** — fits in 23" relay rack with 6U height
- **Field wiring provisions, 2 hole lug terminations** — to meet code requirements
- **Bullet-nose style breakers** — provide easy installation and removal
- **Isolated Form-C alarm output**
- **Return bar**

Product Overview

The DC Distribution Panel for NetSure™ systems is designed to provide overcurrent protection or separation of a single source into multiple feeds on the output of a DC source. This panel can be populated with up to 20 breakers and can be wall-mounted or mounted in a 23" relay rack. The breaker panel accepts bullet-nose style breakers from 1A to 250A. The breakers plug into one of (20) mounting positions. Each position has a localized return landing.

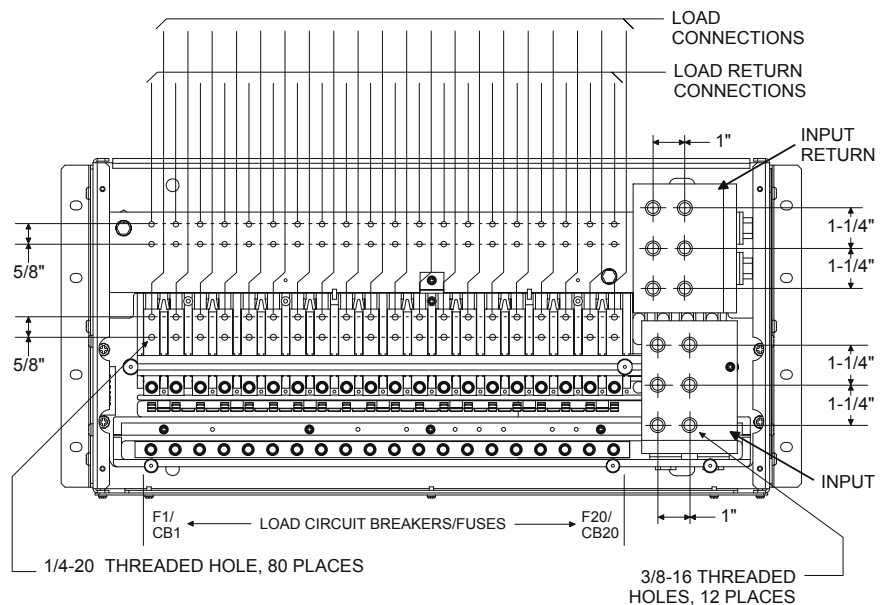


Application

The DC Distribution Panel is ideal for installations where overcurrent protection or separation of load circuits is required on the output of a rectifier or converter. This panel is compatible with NetSure™ DC power systems from Emerson or as standalone.

Additional Information

Reference spec. number 545277 for additional specification, engineering or installation information.



DC Distribution Panel for NetSure™ Systems

Specifications

Input / Output

DC Voltage +24VDC, -24VDC, +48VDC, -48VDC

Input Current 600A*

Environmental

Operating Temp. -40°C to 40°C

Safety Compliance UL/cUL

General

Dimensions (H x W x D) 10.375" x 23.0" x 6.5" / 263mm x 584mm x 165mm

Approx. Weight 34 lbs. / 15.5 Kg (without breakers)

Input Connections (3) 3/8"D x 1" on center per polarity, right side of panel

Output Connections (20) 1/4"D x 5/8" on center, top access

* Not to exceed 80% of each circuit breaker rating. Steady state.

Bullet-Nose Type Circuit Breakers

Ampere Rating	Electrical/Mechanical Trip (Black Handle) *	Electrical Trip (White Handle) **	Ampere Rating	Electrical/Mechanical Trip (Black Handle) *	Electrical Trip (White Handle) **
1	101596	102272	50	101606	102282
3	101597	102273	60	101607	102283
5	101598	102274	70	101608	102284
10	101599	102275	75	101609	102285
15	101600	102276	80	121995	121996
20	101601	102277	100	101610	102286
25	101602	102278	125	516838	516991
30	101603	102279	150	516839	516993
35	101604	102280	200 ***	121832	121831
40	101605	102281	250 ***	121836	121835
45	121997	121998			

NOTES: Load should not exceed 80% of device rating; 125, 150 & 200 amp devices occupy two positions; 250 amp device occupies three positions.

* Provides an alarm during an electrical or manual trip condition.

** Provides an alarm during an electrical trip condition only.

*** Ratings greater than 150 amps REQUIRE an empty mounting position between the breaker and any other overcurrent protective device.

Emerson Network Power.

The global leader in enabling business-critical continuity.

■ AC Power
■ Connectivity

■ DC Power

■ Embedded Computing

■ Embedded Power

■ Monitoring

■ Outside Plant

■ Power Switching & Controls

■ Precision Cooling

■ Racks & Integrated Cabinets

■ Services

■ Surge Protection

© 2009 Emerson Network Power Energy Systems, North America, Inc. All rights reserved.

Emerson Network Power Energy Systems
4350 Weaver Parkway
Warrenville, Illinois 60555
Toll Free: 800-800-1280 (USA and Canada)
Telephone: 440-246-6999 Fax: 440-246-4876
Web: EmersonNetworkPower.com/EnergySystems

This publication is issued to provide outline information only which (unless agreed by Emerson Network Power Energy Systems, North America, Inc. in writing) may not be used, applied or reproduced for any purpose or form part of any order or contract or be regarded as a representation relating to the products or services concerned. Emerson Network Power Energy Systems, North America, Inc. reserves the right to alter without notice the specification, design or conditions of supply of any product or service.

Emerson®, Emerson Network Power™, Business-Critical Continuity™ and NetSure™ are trademarks of Emerson Electric Co. and/or one of its subsidiaries.

Printed in USA

